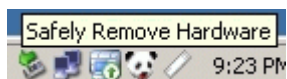


## Transfer Data through USB Mass Storage Feature

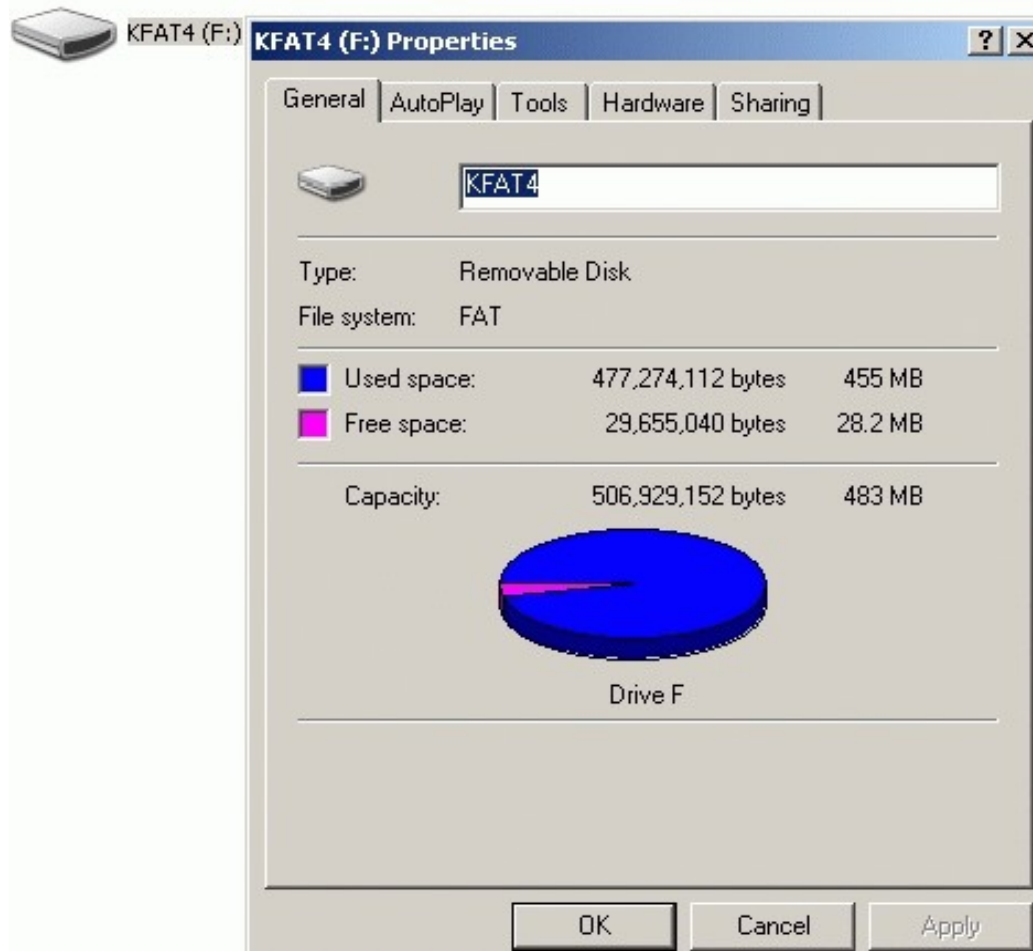
By using **USB Mass Storage** feature of your Samsung E200 mobile, you can access your memory card from PC without using any software/driver. You just need a USB cable and E200 mobile with memory card installed.

**The procedure below works for all SAMSUNG MOBILES with memory card / USB support.**

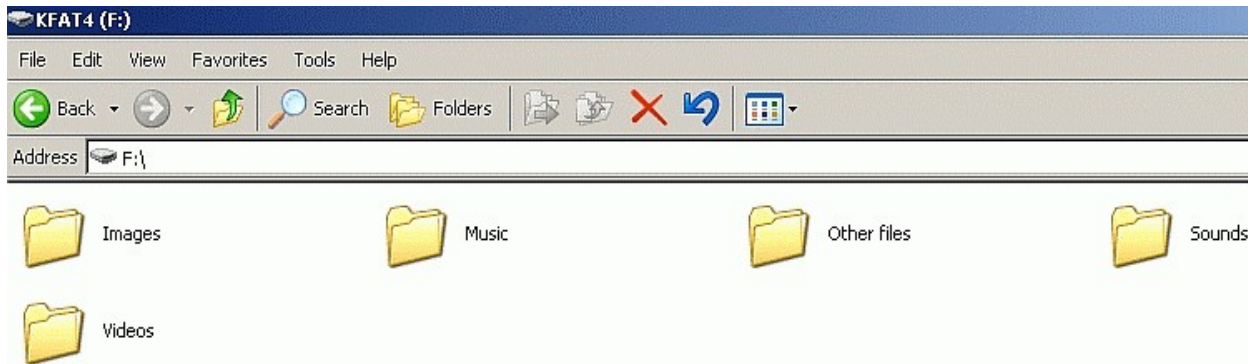
On your mobile, select **Menu/Settings/Phone Settings/USB Settings/Mass Storage** select **Save** and connect your mobile to PC through USB cable. Immediately, memory card will be detected by windows and it will be installed by itself. After this, you will see this icon:



On your PC, go to **My Computer** and here you can see your memory card as a **new removable drive** like this:



Just double click on the icon of this drive and you will see all memory card folders :



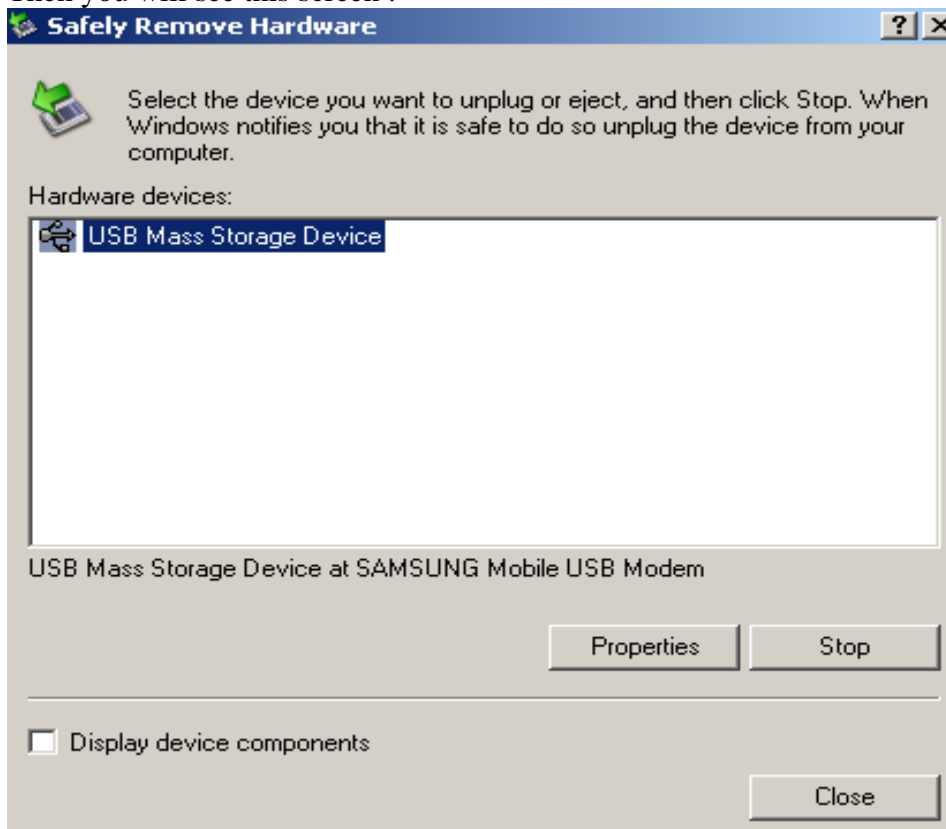
Use **Cut / Copy / Paste** method to transfer all kind of files from PC to Card or Card to PC. To disconnect your memory card, there are two options:

**Option 1 :**

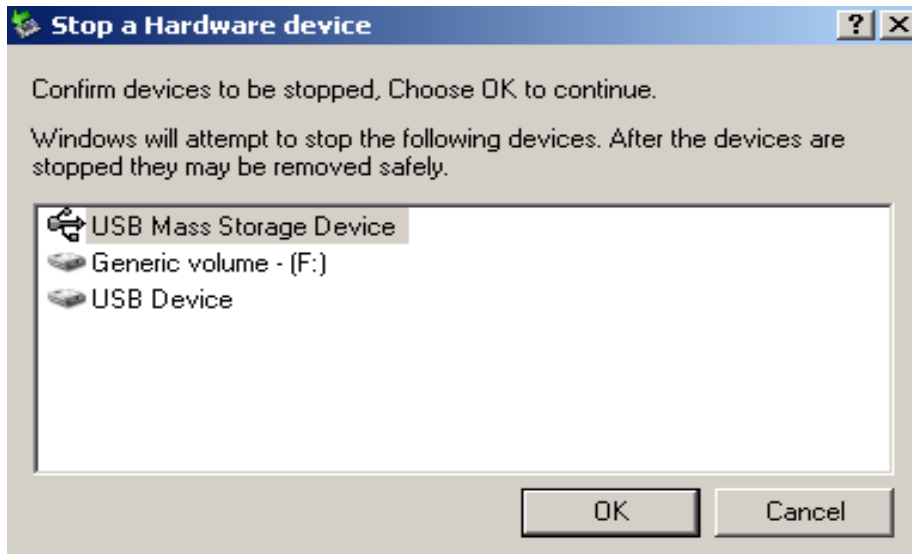
Right click on its icon and select **Safely remove hardware** option.



Then you will see this screen :



Press **Stop** button. This will appear:



Press **OK** button.

### **Option 2 :**

Just select on your mobile : **Menu/Settings/Phone Settings/USB Settings/Modem** and Select **Save** .  
This will disconnect the memory card from PC.