

Samsung Mobile As Modem

Last Updated On : May 18, 2009

Are you using GPRS/ EDGE connection on your Samsung mobile and do you think that it has good speed on mobile. So, why not check your mobile GPRS/ EDGE connection on PC and enjoy browsing experience on your PC. Just follow these simple steps:

Here we assumed that you have already installed “**Samsung PC Studio**” software on your Windows PC. Connect your mobile with PC through USB cable and start the software. This screen will appear:



Just for your knowledge, I am using **Samsung PC Studio 3 version 3.1.3 GJ9**:



Now, go to “Networking Wizard”.



Next screen will be like this:

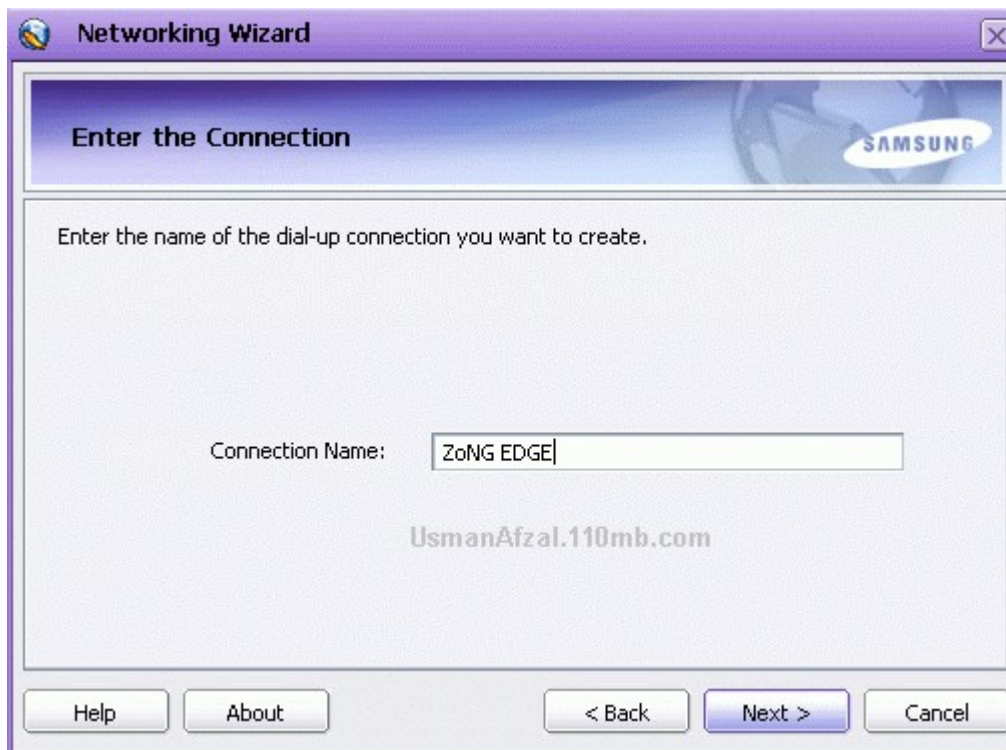


Press "Next".



Select "Create" option and press "Next" button.

Enter the connection name:



I am using “ZoNG” internet connection. So, I have named it : **ZoNG EDGE**. Press “Next”.



Select the “Samsung mobile USB modem” and press “Next” button.



My country “Pakistan” is not there in the list. So, I choose “Other” option. Write APN: zonginternet and phone number: *99**1*1# And press “Next” button.



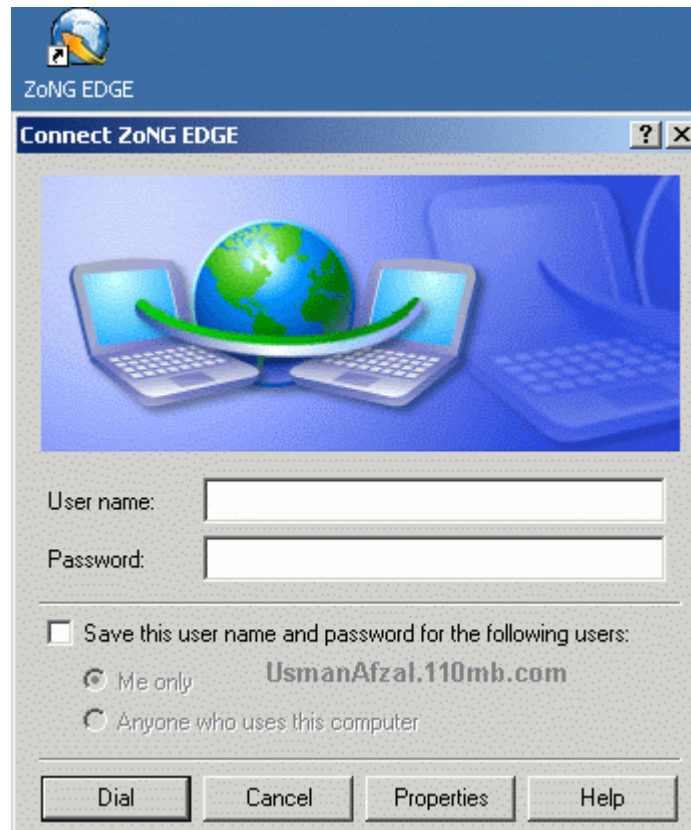
Just press “Next”.



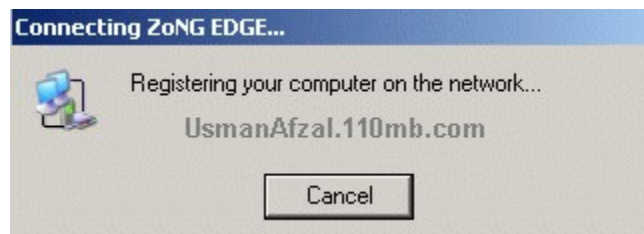
Press “**Finish**” button. You may see this screen:



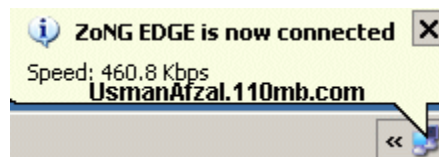
Select :**Yes** option.



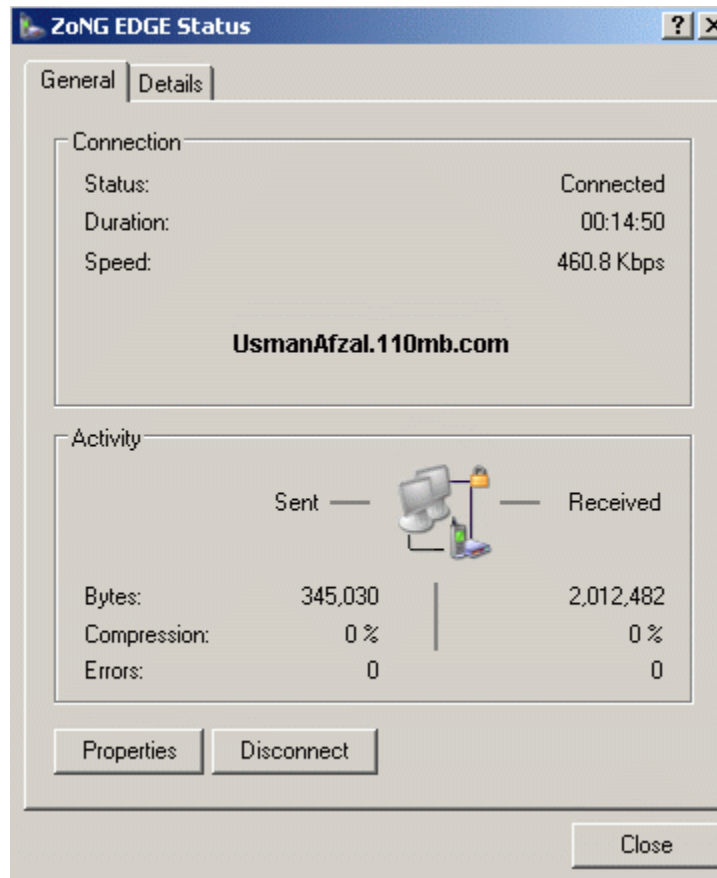
After pressing “Dial” button, you will see this message:



Following this message:



You can see the status of this connection as below:



*Note: Phone number for Samsung mobiles is *99**1*1# (same for all service providers). If you are using Nokia/ SonyEricsson or other mobile then this phone number will be different.*

Then I checked the IP address of my ZoNG EDGE connection:

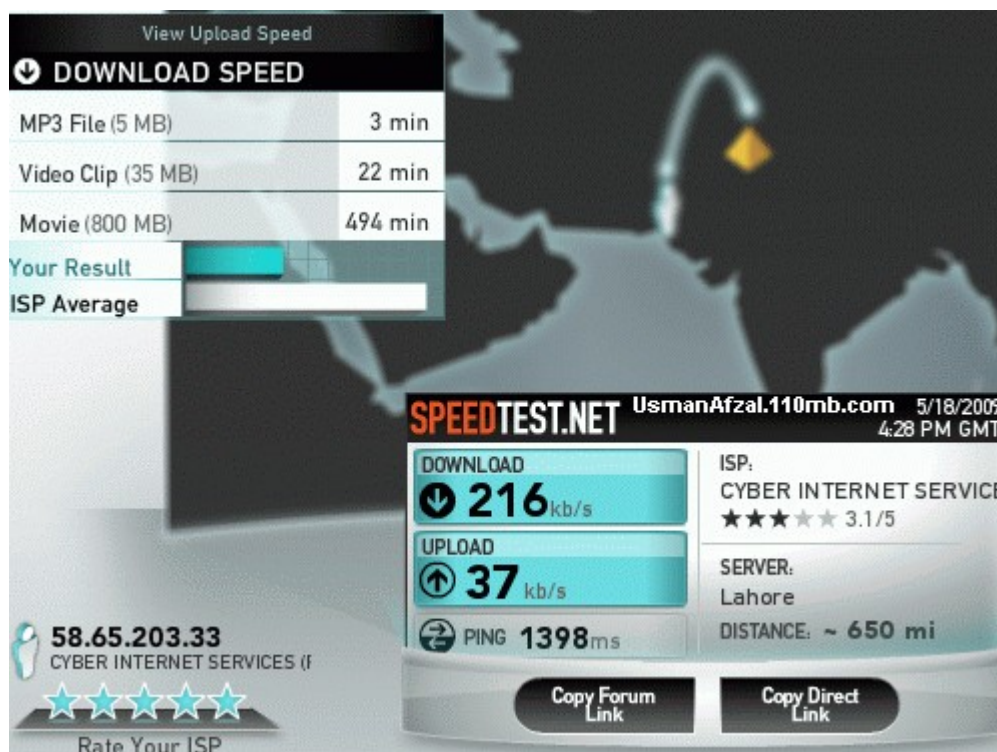
The screenshot shows a website interface with a map of Pakistan in the background. A box on the left says "Welcome! ip: 58.65.203.33". To the right, the following information is displayed:

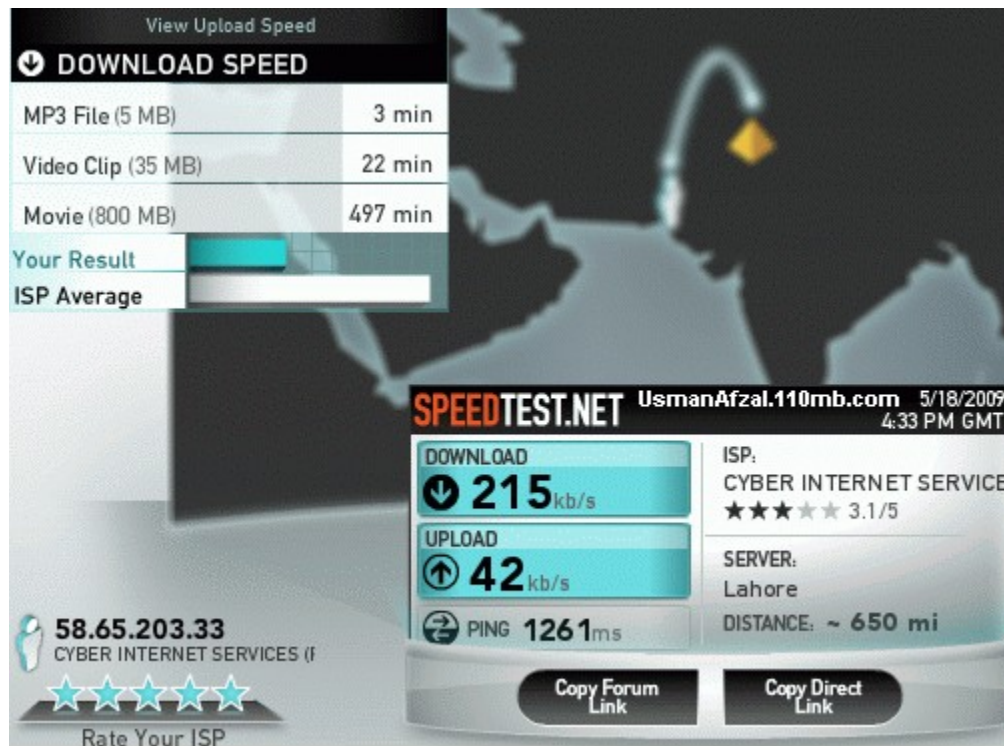
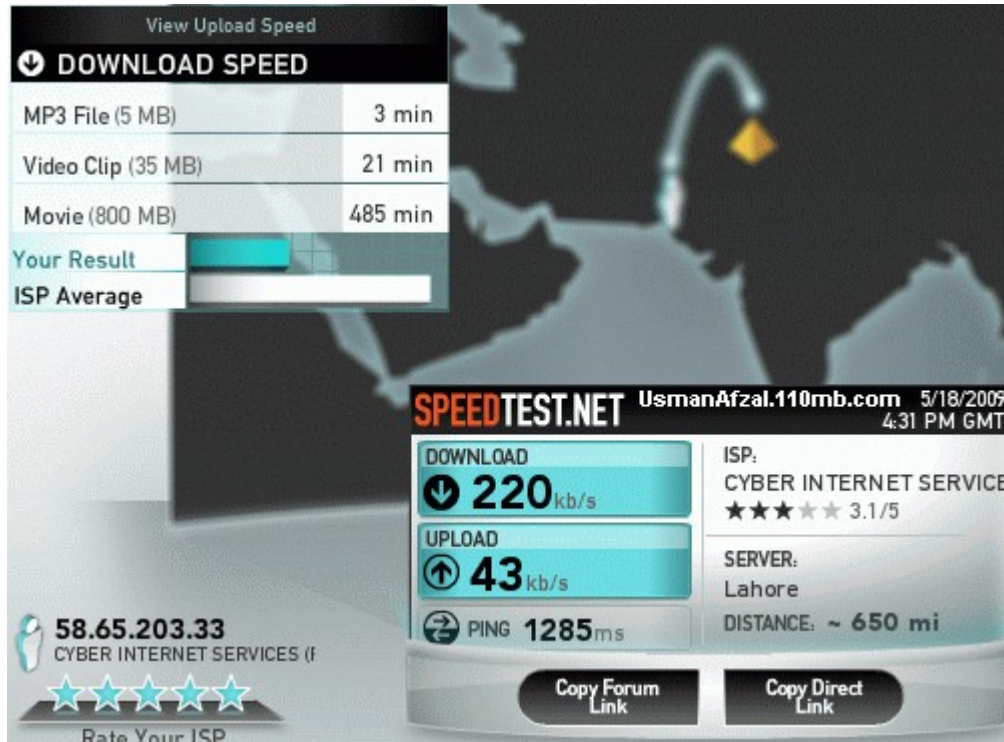
On the date of: **05-18-09 @ 17:08:06 GMT**
My ip address is: **58.65.203.33** [View My Internal IP Addr](#)
My hostname is: **static-58-65-203-33-isb.cyber.net.pk**
My ip location* is: 🇵🇰 **Pakistan - Karachi, Sindh**

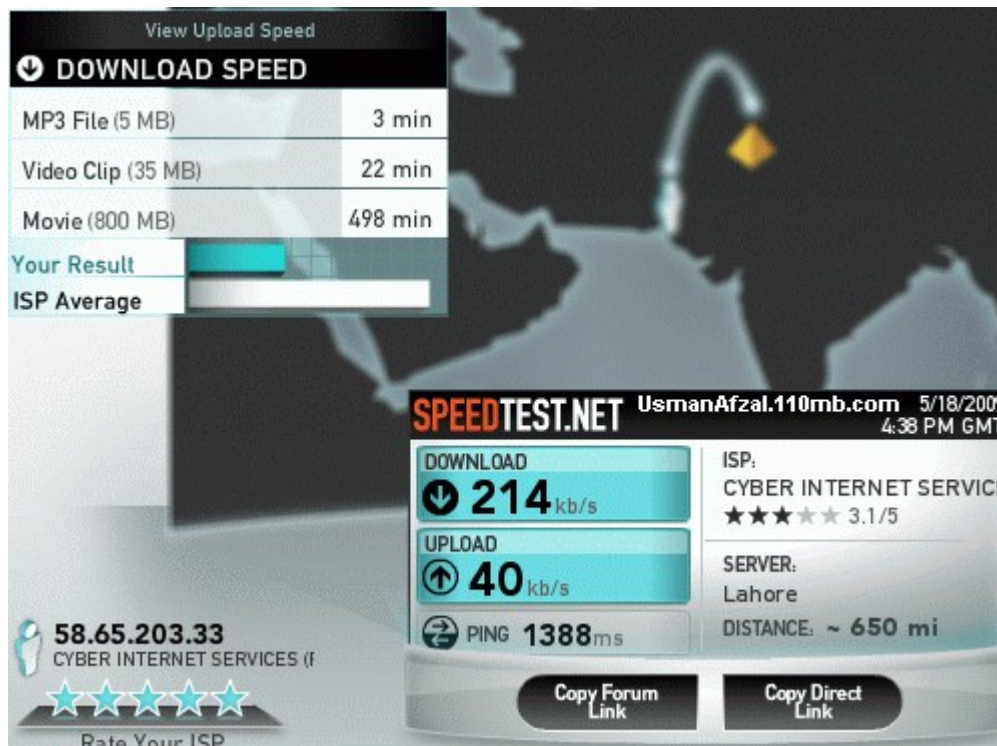
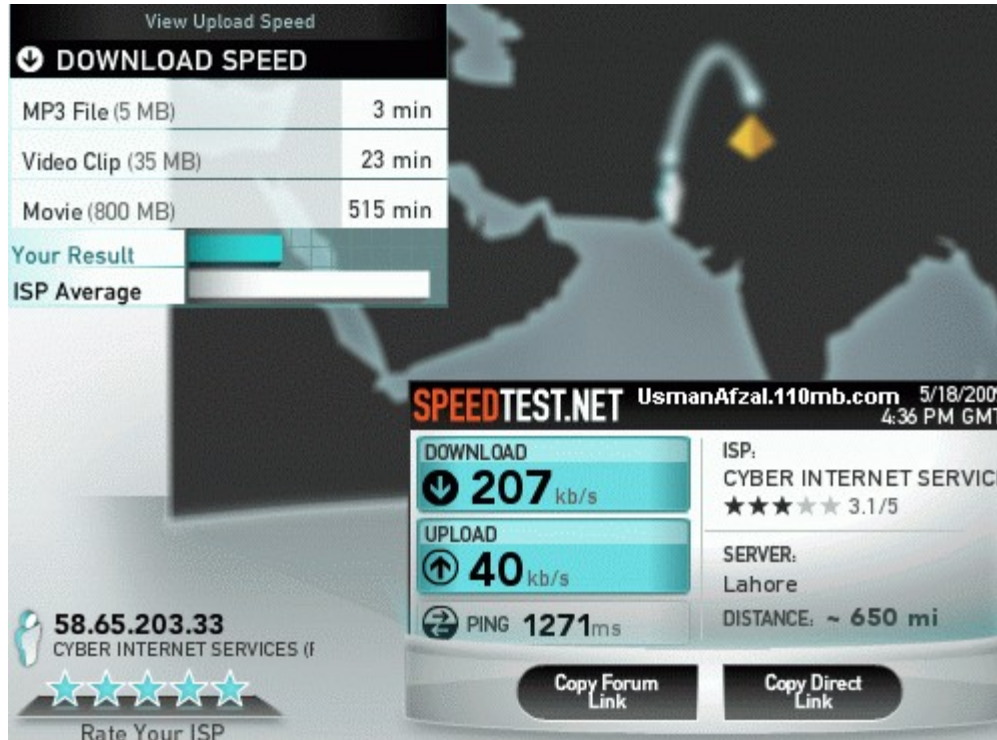
In the next step, I tried to check the download/ upload speed of my ZoNG's unlimited EDGE connection. These are the statistics:

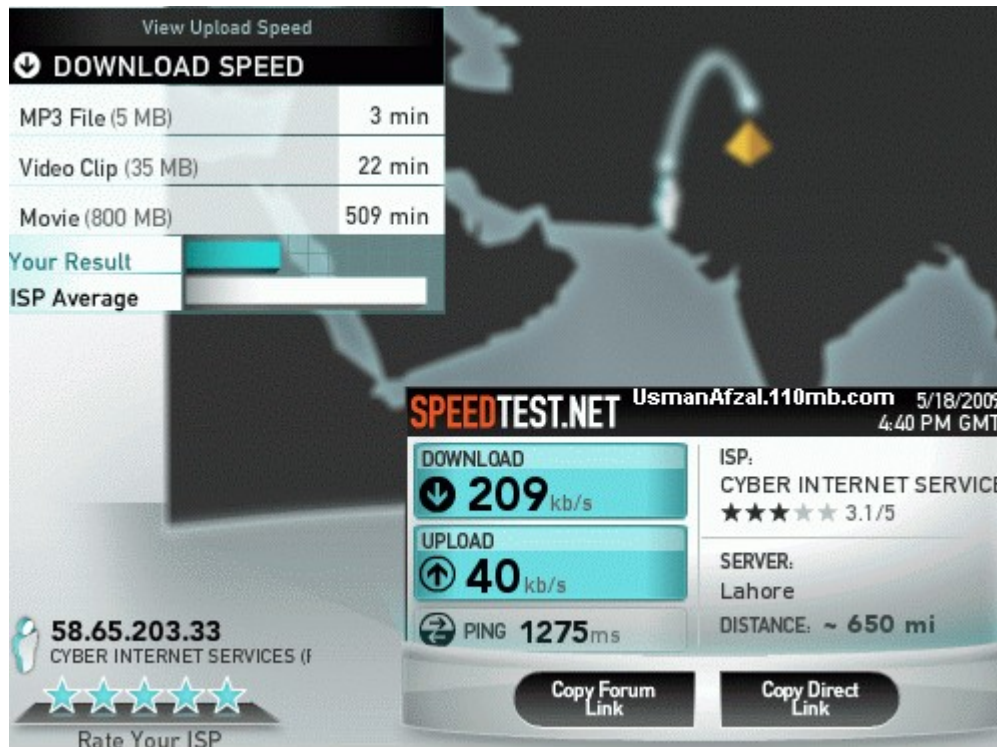
Website: <http://www.speedtest.net>
Date/Time: 18 May, 2009 @ 10:30 PM PST (or 4:30PM GMT)
Mobile: Samsung E200
Hardware support: EDGE Class 10 (maximum 236.8 kilobits/sec)
PC Browser: Mozilla Firefox 3
OS: Windows XP
Connection type: USB cable
User Location: Gulshan-e-Iqbal, Karachi, PAKISTAN
Distance: 650 miles (between user and testing server)
Server used for test: Wateen Telecom Lahore, PAKISTAN (<http://www.wateen.com>)
ZoNG connection: Cyber Internet Services, PAKISTAN
ZoNG IP address: 58.65.203.33
Avg. Download speed: $(216+220+215+207+214+209)/6 = 213.5$ kilobits/sec (or 26.68 KiloBytes/sec)
Average Upload speed: $(37+43+42+40+40+40)/6 = 40.33$ kilobits/sec (or 5.04 KiloBytes/sec)
Average Ping (latency) Time: $(1398+1285+1261+1271+1388+1275)/6 = 1313$ milliseconds

These are the **six screenshots** of all these speed tests:









Warning: Make sure that you have UNLIMITED data package on your SIM, otherwise this will be very costly because majority of GPRS plans charges per MB (data size). So, check your current GPRS plan before proceed.

Muhammad Usman Afzal

usmanafzal101@gmail.com